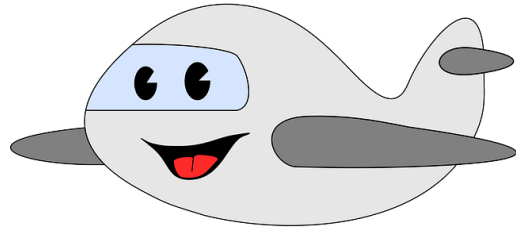
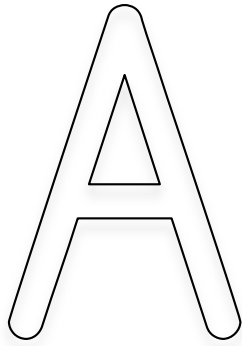




# Las vocales en mayúscula



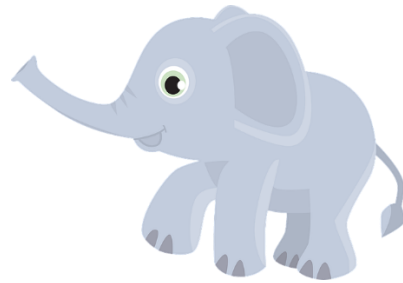
*estudiandoconmama.com*



# Las vocales en mayúscula



E



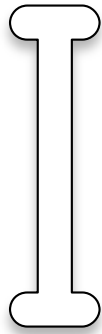
*estudiandoconmama.com*

Tracing practice row 1: A horizontal box containing four dashed uppercase letter 'E's for tracing, with a dashed midline and a solid bottom line.

Tracing practice row 2: A horizontal box containing four dashed uppercase letter 'E's for tracing, with a dashed midline and a solid bottom line.

Tracing practice row 3: A horizontal box containing four dashed uppercase letter 'E's for tracing, with a dashed midline and a solid bottom line.

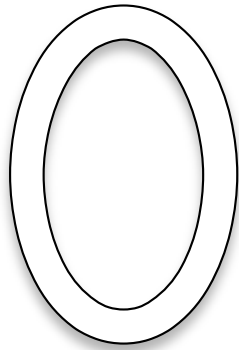
# Las vocales en mayúscula



*estudiandoconmama.com*



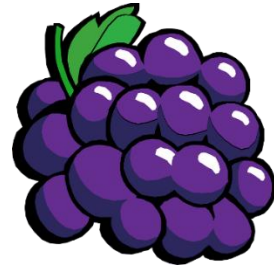
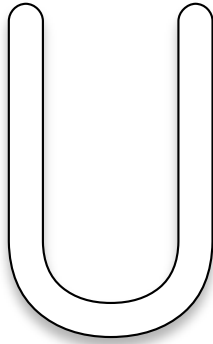
# Las vocales en mayúscula



*estudiandoconmama.com*



# Las vocales en mayúscula



*estudiandoconmama.com*

